

PRODUCT NUMBER

87610-YXXLF

WHEN REQUIRED, ADD SUFFIX LETTER "LF" INDICATES THE PRODUCT IS RoHS COMPATIBLE, SEE NOTE 7

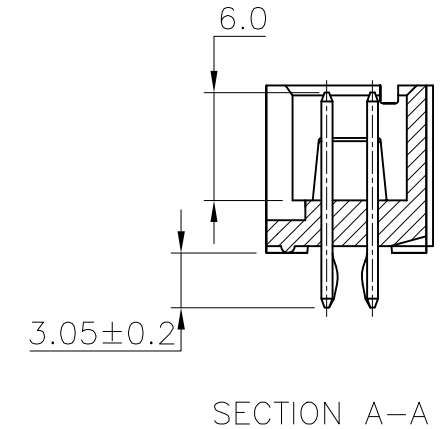
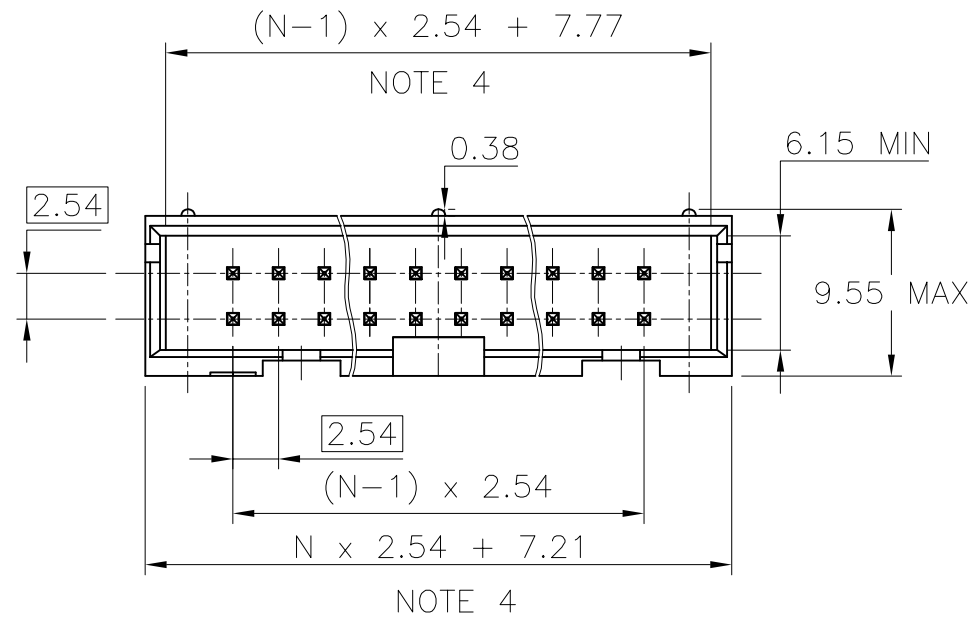
PLATING

2 = 0.76µm GOLD/GXT (PdNi WITH GOLD FLASH) ON CONTACT AREA  
3.81µm TIN-LEAD ON TAIL

UNDERPLATE : 1.27µm Ni MIN

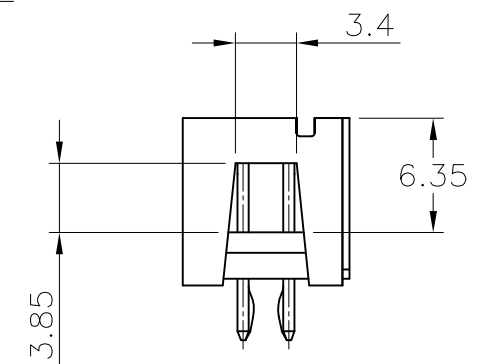
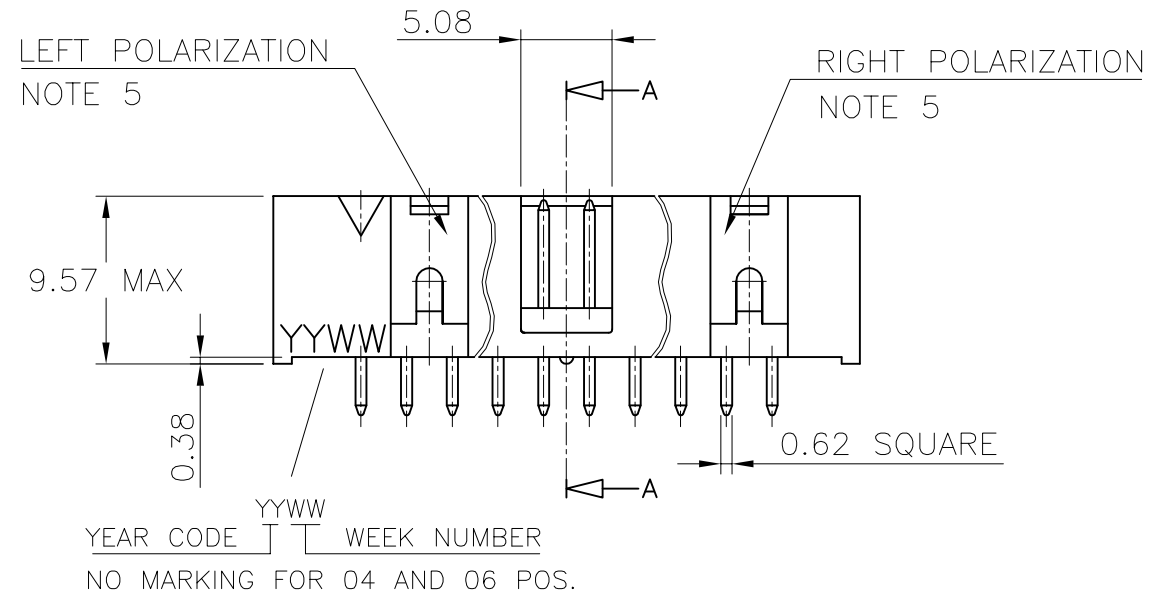
- WHEN SUFFIX LETTER "LF" IS REQUIRED, 2µm MIN MATTE TIN OVER 1.27µm MIN NICKEL IS PROVIDED INSTEAD OF TIN-LEAD

TOTAL NUMBER OF POSITIONS	
06	26
08	34
10	40
14	44
16	50
18	60
20	64



NOTES:

- 1 - HOUSING MAT'L : GLASS FILLED THERMOPLASTIC. UL94V-0 COLOR: BLUE
- 2 - PIN MATERIAL : PHOSPHOR BRONZE
- 3 - PRODUCT PACKAGED IN TUBES.
- 4 - TO DETERMINE DIMENSIONS :  
N = NUMBER OF POSITIONS PER ROW  
EXAMPLE : 8 POS N x 2.54 = 20.32mm
- 5 - NO LEFT POLARIZATION FOR POS 04, 06, 08, 14.  
NO RIGHT POLARIZATION FOR POS 04, 06, 08.
- 6 - RETENTION LEGS IN THE CENTER OF THE CONNECTOR.
- 7 - RoHS COMPATIBLE PRODUCT SPECIFICATIONS



a - PLATING:

- "LF" MEANS THE PRODUCT IS LEAD-FREE, 2µm MINIMUM MATTE TIN OVER 1.27µm MINIMUM NICKEL UNDERPLATE.

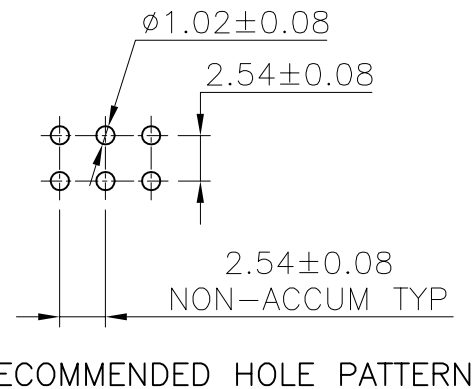
b - MANUFACTURING PROCESS COMPATIBILITY

- THE HOUSING WILL WITHSTAND EXPOSURE TO 260°C ±5°C SOLDER BATH TEMPERATURE FOR 5 SECONDS IN A WAVE SOLDER APPLICATION WITH A 1.6mm MIN THICK CIRCUIT BOARD.

c - LABELLING:

- MEETS PACKAGING SPECS AS PER GS-14-920

d - LEGAL STATEMENT: SEE GS-22-008



mat'l. code		surface		tolerance		projection		product family	
SEE NOTES		ISO 1302		ISO 406 ISO 1101		mm		QUICKIE	
ltr	ecn no	dr	date	tolerances unless otherwise specified		mm		title	
K	F07-0198	LMU	07.05.30	.X ±0.3		mm		SHR.LP.HEADER	
L	F08-0146	YOV	08.04.11	.XX ±0.13		mm		STR RETENTION LEGS	
				.XXX ±0.05		scale 2.5:1			
F	F60270	PNZ	96.05.25	dr	DLE	01.01.24	dwg no		sheet 1 of 1
G	F10109	LMU	01.01.12	enr	JCO	04.12.20	87610		A3
H	F04-0389	JCO	04.12.22	chr			type		CUSTOMER Drawing
J	F06-0229	LMU	06.07.18	appd	JCO	04.12.22			
sheet index	revision sheet								